

# Safety Valves

## Type 06603



**Safety Valves, angle type, bronze, type tested TÜV-SV.1080. D/G**

Standard safety valve  
with O-ring valve seal,  
closed bonnet, with lifting device,  
with enlarged outlet  
In- and outlet: female thread type G (BSPP) acc. to ISO 228/1

**Part No. 06603.1204.0000**

Available options - on request only:  
· external parts nickel plated



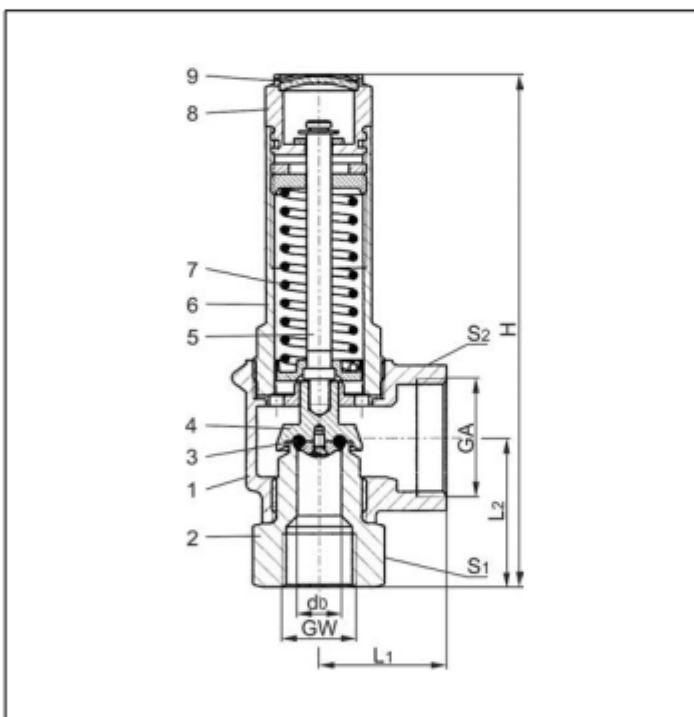
### Applications:

Provided as safety device for protection against excessive pressure in pressure vessels and steam boilers. Approved for non-toxic gases, vapours and for saturated steam.

Working temperature: -10°C / +14°F (263K) up to +180°C / +356°F (453K)

For saturated steam use only up to 3 bar and +135°C / +275°F (408K)

| Materials        | DIN EN | ASME/ASTM         |
|------------------|--------|-------------------|
| 1 Body           | CC491K | B 62 UNS C83600   |
| 2 Inlet body     | CW614N | B 111 UNS C28000  |
| 3 O-ring         | EPDM   |                   |
| 4 Disc           | CW614N | B 249 UNS C38500  |
| 5 Stem           | CW614N | B 249 UNS C38500  |
| 6 Bonnet         | CW614N | B 249 UNS C38500  |
| 7 Spring         | 1.4571 | A 313 Grade 316Ti |
| 8 Lifting device | CW614N | B 249 UNS C38500  |
| 9 Closing cap    | CW507L | B 36 UNS C26800   |



**Essential:** Valves are delivered at a set pressure, therefore when ordering please confirm set pressure, medium and temperature.

Standard marking acc. to Pressure Equipment Directive 97/23/EC (PED).



| Type 06603                       | Technical data |            |
|----------------------------------|----------------|------------|
| <b>Nominal size</b>              | <b>GW</b>      | <b>1/2</b> |
| Orifice                          | d <sub>0</sub> | 12.5       |
| Set pressure range               | bar            | 0.2-5      |
| Outlet                           | GA             | 1          |
| Height                           | H              | 145        |
| Length                           | L <sub>1</sub> | 36         |
| Length                           | L <sub>2</sub> | 42         |
| Wrench size across flats         | S <sub>1</sub> | 32         |
| Wrench size across flats         | S <sub>2</sub> | 41         |
| Weight                           | ca. kg         | 0.7        |
| Coeff. of discharge from 3.0 bar | α <sub>w</sub> | 0.74       |

Dimensions in mm.