

# Fire Safe and Offshore Valves

## Type 03841 - Globe Valve



Cryogenic-Globe and Globe/Check Valves, class 300  
 "Fire safe" type test approval acc. to EN ISO 10497

Stainless steel body and topwork,  
 "live loaded" gland packing  
 "cleaned and degreased for oxygen service"

Part No. 03841.X.0013 (H = 270mm)  
 Part No. 03841.X.0023 (H = 370mm)  
 Part No. 03841.X.5013 (H = 270mm) Globe/Check Valve  
 Part No. 03841.X.5023 (H = 370mm) Globe/Check Valve  
 Flanged connection acc. to ANSI B16.5 class 300

Available options - on request only:  
 · Nominal sizes DN15, DN20 and DN150 with welding-neck flange

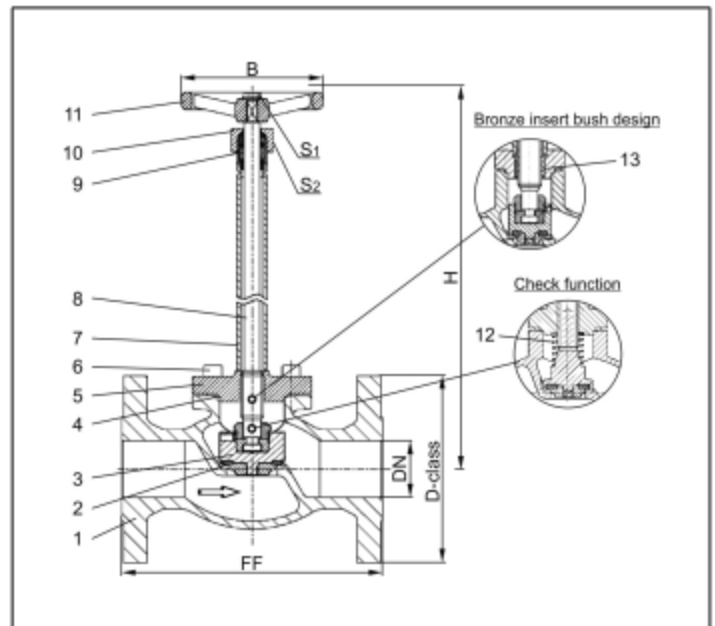


### Applications:

Suitable for hydrogen, approved for air gases, vapours and cryogenic liquefied gases incl. LNG.  
 Working temperature: -255°C / -427°F (18K) up to +120°C / +248°F (393K)

| Materials         | DIN EN                     | ASTM              |
|-------------------|----------------------------|-------------------|
| 1 Body            | 1.4409                     | A 351 CF3M        |
| 2 Valve seal      | PTFE / Carbon filled (25%) |                   |
| 3 Disc            | 1.4404                     | A 276 Grade 316L  |
| 4 Bonnet gasket   | Graphite                   |                   |
| 5 Headpiece       | 1.4404                     | A 276 Grade 316L  |
| 6 Bolts           | 1.4571/A4                  | similar A 194 B8T |
| 7 Elongation tube | 1.4571                     | A 213 TP 316Ti    |
| 8 Stem            | 1.4404                     | A 276 Grade 316L  |
| 9 Gland packing   | Graphite / PTFE / MICA     |                   |
| 10 Gland nut      | 1.4404                     | A 276 Grade 316L  |
| 11 Handwheel      | 1.4409                     | SA 351 CF3M       |
| 12 Spring         | 1.4571                     | A 313 Grade 316Ti |
| 13 Bush           | CW452K                     | B 159 UNS C51900  |

Standard marking acc. to Pressure Equipment Directive 97/23/EC (PED).



| Type 03841                                   | Technical data    |                  |       |      |       |       |       |     |
|--|-------------------|------------------|-------|------|-------|-------|-------|-----|
|  | Nominal size      | DN               | 25    | 40   | 50    | 65    | 80    | 100 |
| Dimension code - Flange ANSI B16.5 class 300 | .X.               | 1000             | 1400  | 2000 | 2400  | 3000  | 4000  |     |
| Flange-Ø                                     | D-class           | 123.9            | 155.4 | 165  | 190.5 | 209.5 | 254   |     |
| Face-to-face dimension                       | FF                | 160              | 200   | 230  | 290   | 310   | 350   |     |
| Height                                       | H                 | 270 mm or 370 mm |       |      | 400   | 400   | 400   |     |
| Handwheel-Ø                                  | B                 | 100              | 125   | 125  | 200   | 250   | 315   |     |
| Wrench size across flats                     | S <sub>1</sub>    | 10               | 13    | 13   | 13    | 13    | 13    |     |
| Wrench size across flats                     | S <sub>2</sub>    | 30               | 36    | 36   | 36    | 36    | 41    |     |
| Weight                                       | ca. kg            | 4.9              | 9.7   | 13.3 | 21.1  | 28.0  | 43.2  |     |
| Kvs-Value                                    | m <sup>3</sup> /h | 11.5             | 22.6  | 37.1 | 71.1  | 104.0 | 170.0 |     |
| Cv-Value                                     | gal/min           | 13.4             | 26.3  | 43.2 | 82.7  | 120.9 | 195.2 |     |

Dimensions in mm.

