



Security in action



THE LIGHT SOLUTION FOR WELDING **COMBILITE ARGON**

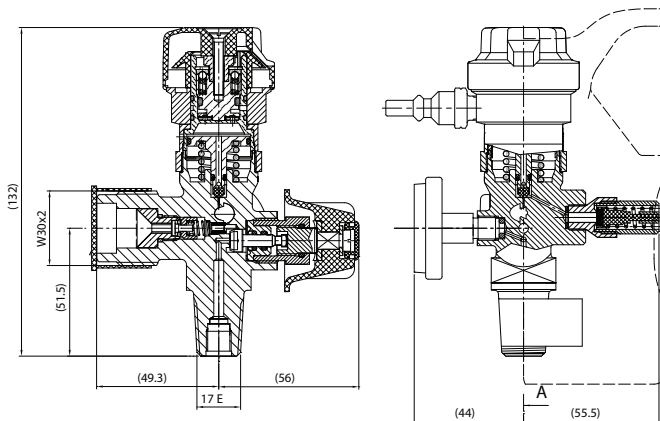
EDITION 1/2013

Combilite Argon was developed to offer light design and easy operation for welding process.

The integrated flow head with range of 11 flows from 6 to 25 litres per minute guarantee quick setting of the requested flow.

Combilite Argon is supplied including plastic guard, which is approved for cylinders according to EN ISO 11117.

Allowed size of cylinder depends on it's weight and weight of gas. Maximum weight of whole set with gas must not be higher then 25 kg.



CYLINDER VALVES

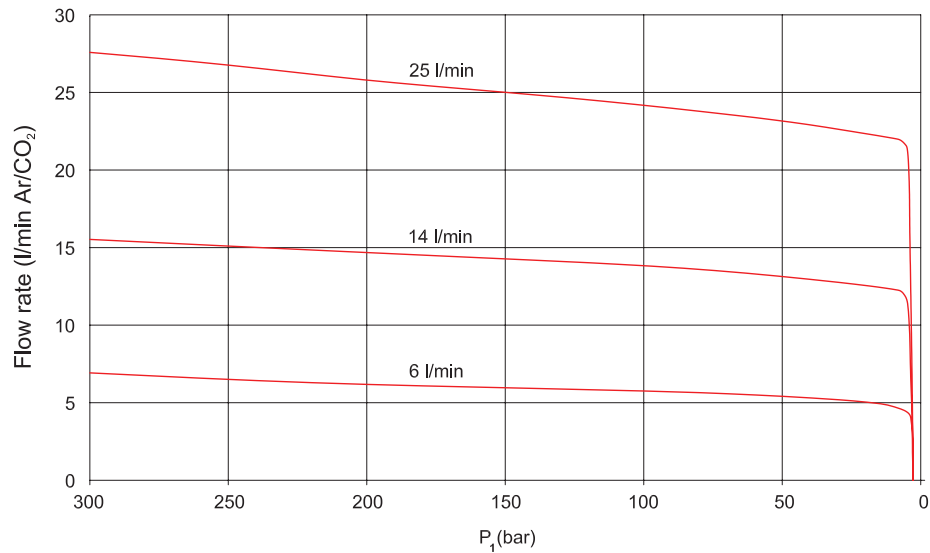
VIEWS



TECHNICAL DATA

Outlet pressure	2 bar
Inlet pressure	200/300 bar
Outlet flow	0 - 25 l/min
Residual pressure valve close	4 bar
Flow rate (l/min)	6 7 8 9 10 12 14 16 18 20 25

FLOW CHART



DESCRIPTION

Combilite Argon design was examined according to requirements of Directive 2010/35/EU and is marked with π.

Flow Selector for easy setting of flows

Residual Pressure Valve protect the cylinder from being fully evacuated

Shut off valve



Outlet quick connector according to European Standard EN 561

Filling port with Non Return Valve

Active cylinder pressure gauge indicates the quantity of gas, even when the cylinder valve is closed

Art. Nr.	Inlet pressure	Filling port thread
0711011	200 bar	W 21,7 × 1/14
0711012	300 bar	W 30 × 2



Gas Control Equipment
www.gcegroup.com