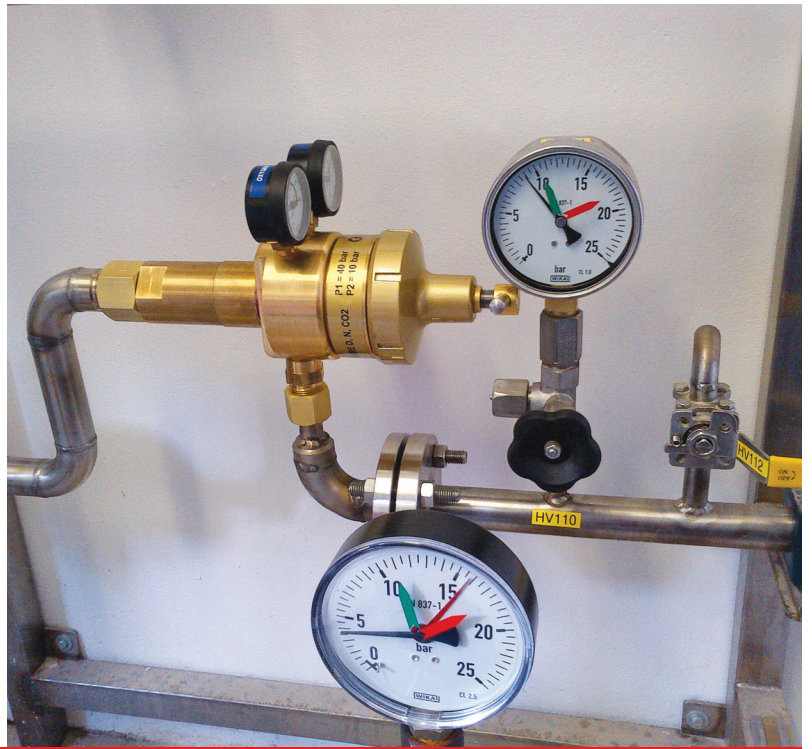




Security in action

## INDUSTRIAL LOW PRESSURE REGULATOR **S151**

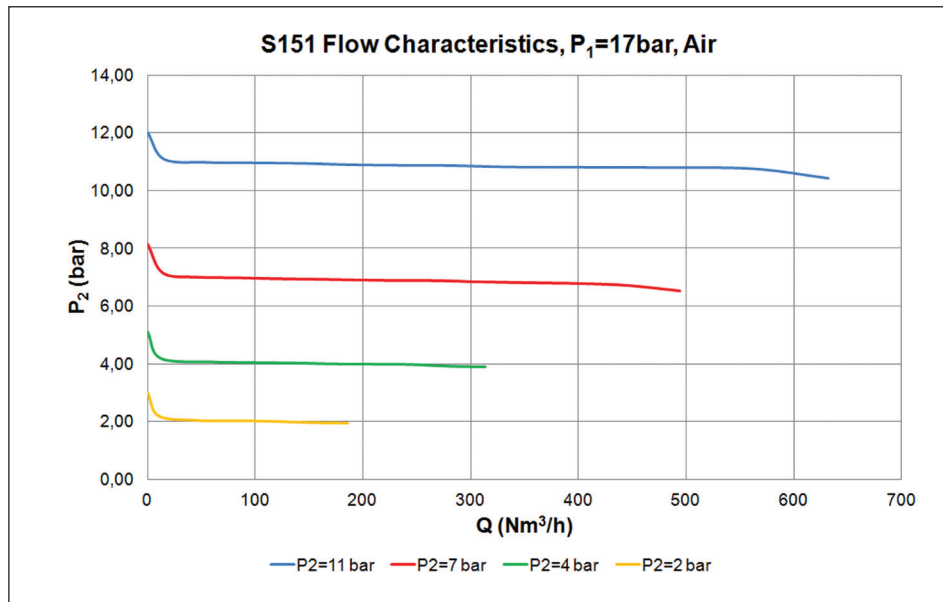


EDITION 1/2012

- S151 is low pressure high flow regulator for industrial applications.
- Oxygen and inert gas service up to 600Nm<sup>3</sup>/h
- 90°connectors (rear entry, bottom outlet) for direct in-line mounting as the tapping point regulator
- It is pneumatic controlled (dome loaded) regulator with integrated pilot regulator. This design feature is stabilizing outlet pressure at the high flow.
- Integrated inlet filter ensures reliable function of the regulator even with old or dirty upstream pipeworks.
- It can be used in many low pressure applications where is requested high-flow outlet with constant delivery pressure.
- Typical applications: Oxy-fuel cutting and other various oxy-fuel processes, laser process gas service, arc welding shielding gas pressure stabilizing.



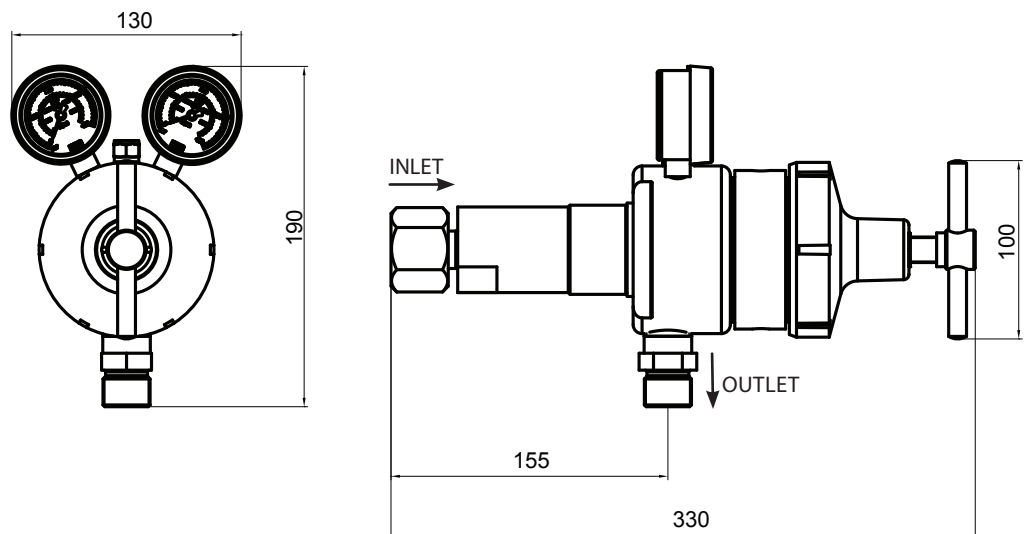
## FLOW CHARACTERISTICS



## TECHNICAL DATA

Bodies and bonnet material	Brass
Main diaphragm material	EPDM
Pilot diaphragm material	NBR
Seat sealing	PA
Inlet filter	37,5 µm, bronze
Connectors & fittings	Brass
Inlet connection	G1"
Outlet connection	G3/4"
Maximal inlet pressure for oxygen	30bar
Maximal inlet pressure for inert gases	40bar
Outlet pressure range	0-10bar
Temperature range	from -20°C to 60°C
Coefficient „i“	0,042
Coefficient „R“	0,090
Weight	6,9 kg

Art. Nr.	Description	Gas service	Inlet	Outlet
0772037	Regulator S151	O, D, N, CO <sub>2</sub>	G1" / 40 bar (for Oxygen: 30 bar)	G3/4" / 10 bar



**GCE**

Gas Control Equipment

GCE world-wide: <http://www.gcegroup.com>