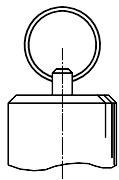
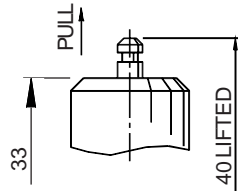


ILLUSTRATED SHOWING
TYPE R
CRIMPED ROTA-LIFT
EASING GEAR

ALTERNATIVE TOP FITTING



TYPE PR
PULL RING
EASING GEAR



TYPE SL
CRIMPED SPINDLE-LIFT
EASING GEAR

PARTS LIST & MATERIAL SPECIFICATION

		75008
1	BODY	BRASS BS 2874 CZ132
2	TUTCHTITE SEAL	TO SUIT APPLICATION
3	PLUNGER	BRASS BS 2874 CZ132
4	SPRING	ST.STL. BS 2056 302S26
5	ADJUSTER	BRASS BS 2874 CZ132
6	CAP	BRASS BS 2874 CZ132
7	NAMEPLATE	AL.ALLOY

APPROVALS

Ad - MERKBLATT A2: (TÜV GERMANY), REF.- T.Ü.V.SV.11-276.7,9.D/G.0,63.p.
P.E.D. 97/23/EC
Type examination module B, Cert. No. 01 202 111-B-00015
Quality management system module D, Cert. No. EDS0002011/01
Designed in accordance with BS 6759:1984 & BS EN I.S.O. 4126-1

TECHNICAL DATA

Relieving pressure = Set pressure +10% (0.1 Bar.g below 1.0 Bar.g)
Reseating pressure = Set pressure -10% (0.3 Bar.g below 3.0 Bar.g)
Maximum set pressure = 5 Bar.g
Minimum set pressure = 0.27 Bar.g
Flow area = 49mm²
Inlet bore diameter = 7.9mm
T.Ü.V. Derated coefficient of discharge α_d = 0.63 below 3.0 Bar.g see ' α_d Vs set pressure chart'.
Temperature range = -0°C to 150°C subject to seal materials.
FOR FURTHER INFORMATION, INSTALLATION AND OPERATIONS, CONVERSION FACTORS ETC.
SEE TECHNICAL INFORMATION SECTION.



SEETRU LIMITED

ALBION DOCKSIDE WORKS, BRISTOL. BS1 6UT
TELEPHONE +44 (0) 117 927 9204, FAX +44 (0) 117 929 8193
www.seetru.com enquires@seetru.com

8mm Nominal Bore BRASS
DIRECT SPRING LOADED ATMOSPHERIC
DISCHARGE SAFETY VALVE FOR STEAM

SERIES
TYPE 75008

SHEET 1 OF 3 SHEETS

FLOW CHART (T.U.V.)

- TO CALCULATE INTERMEDIATE FLOWS SEE TECHNICAL INFORMATION SECTION

SET PRESSURE Bar.g	0.27	0.5	1.0	1.5	2	3	4	5
CERTIFIED DISCHARGE CAPACITY IN ACCORDANCE WITH TÜV STEAM Kg/hr	14.68	20.9	32.2	42.4	51.6	71.0	88.4	105.3

FLOW CHART (EN 4126-1)

SET PRESSURE Bar.g	0.27	0.5	1.0	1.5	2	3	4	5
CERTIFIED DISCHARGE CAPACITY IN ACCORDANCE WITH EN 4126-1 Kg/hr	14.0	20.0	31.25	41.0	50	68.4	85.1	102

VALVE SELECTION CHART

STANDARD THREADS SIZES SHOWN, OTHER SIZES MAY BE AVAILABLE.

INLET CONNECTION	ORDERING CODE	TOP FITTING CODE		
		R	SL	PR
R 1/4 (1/4" BSP TAPER)	75008	1224	0424	2024
1/4" NPT		1234	0434	2034
R 3/8 (3/8" BSP TAPER)		1254	0454	2054
3/8" NPT		1264	0464	2064

Example: Order code 75008 123 4 is Rota-lift type easing gear, 1/4"BSP.TR inlet connection, with Silicone seals and crimped locking.

Seal Material: Last digit of ordering code 4 calls up Silicone seal. When other material is required, last digit changes to:-

- 4. Silicone.
- 6. Ethylene Propylene.



SHEET 2 OF 3 SHEETS

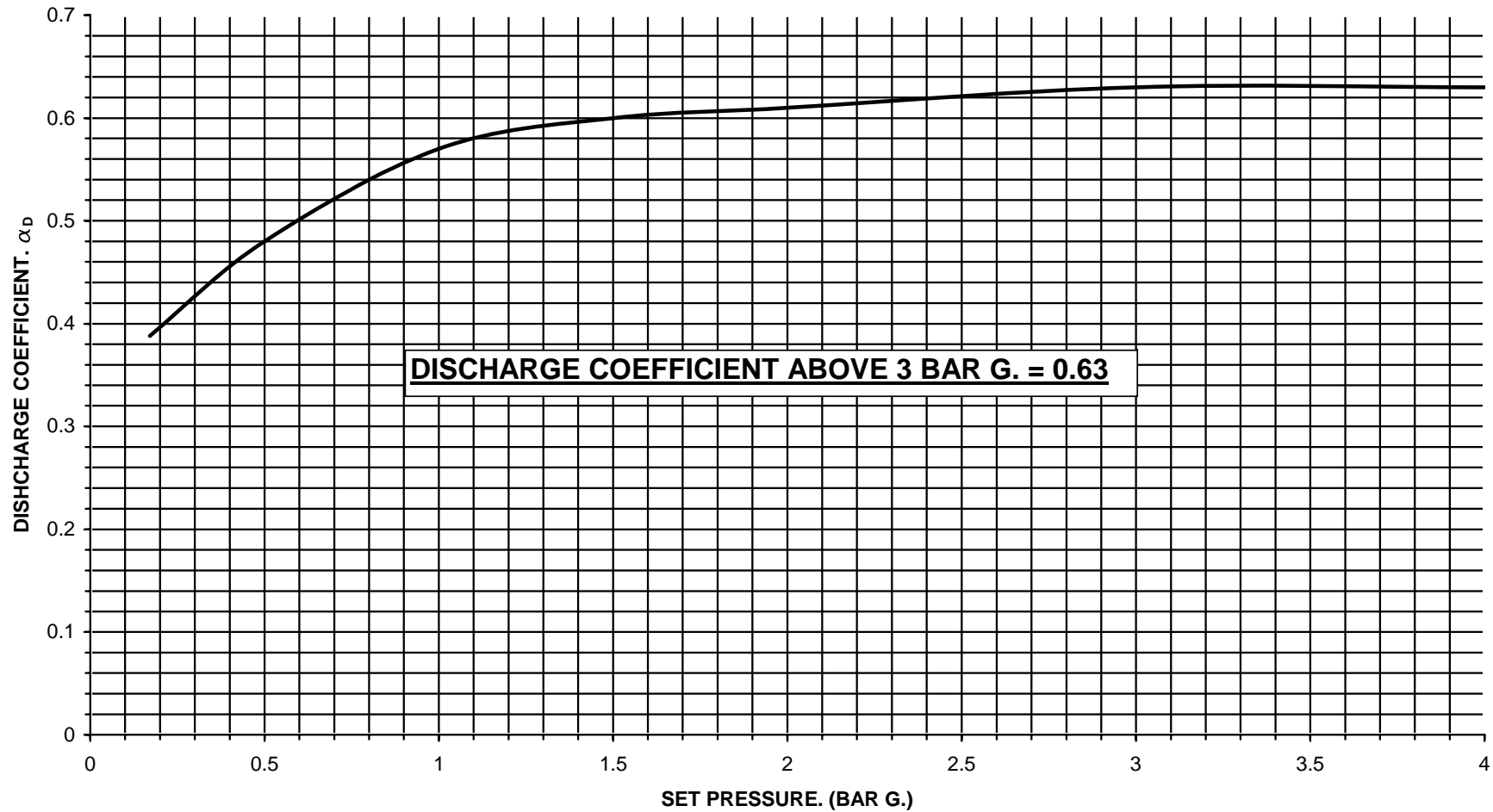
SEETRU LIMITED

ALBION DOCKSIDE WORKS, BRISTOL. BS1 6UT
 TELEPHONE +44 (0) 117 927 9204, FAX +44 (0) 117 929 8193
 www.seetru.com enquires@seetru.com

8mm Nominal Bore BRASS
 DIRECT SPRING LOADED ATMOSPHERIC
 DISCHARGE SAFETY VALVE FOR STEAM

SERIES
 TYPE 75008

PRESSURE / DISCHARGE COEFFICIENT CURVE FOR VALVE 75008. 0.27 - 4.0 BAR G.



SEETRU LIMITED
 ALBION DOCKSIDE WORKS, BRISTOL. BS1 6UT
 TELEPHONE +44 (0) 117 927 9204, FAX +44 (0) 117 929 8193
 www.seetru.com enquires@seetru.com

8mm Nominal Bore BRASS
 DIRECT SPRING LOADED ATMOSPHERIC
 DISCHARGE SAFETY VALVE FOR STEAM

SERIES
 TYPE 75008

SHEET 3 OF 3 SHEETS