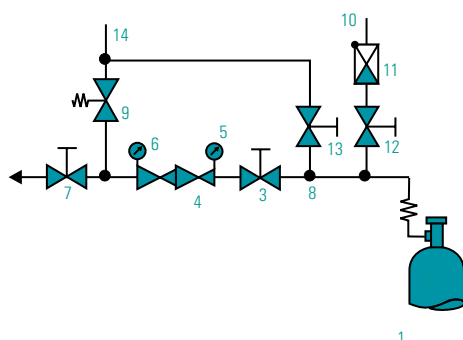


**Double-stage, for reactive, toxic, slight corrosive, oxidizing and corrosive (option Hastelloy internals) gas and gas mixtures, purity max. 6.0, inlet pressure 230 bar / 3300 psi, outlet pressure range 0,2 - 10,5 bar / 3 - 150 psi**

### Highlights

- ▲ External gas purging device
- ▲ Hastelloy-internals for corrosive gases as option



- 1 Cylinder connection
- 2 Connection spiral
- 3 Process gas inlet shut-off valve
- 4 Pressure regulator, double-stage
- 5 Inlet pressure gauge
- 6 Outlet pressure gauge
- 7 Process gas outlet shut-off valve
- 8 Process gas inlet
- 9 Relief valve
- 10 Purge gas inlet
- 11 Non-return valve
- 12 Purge gas inlet valve
- 13 Purge gas outlet valve
- 14 Purge gas outlet

### Features

The SMD 502-27 is mounted on a stainless steel panel and consists of a pressure regulator, inlet and outlet pressure gauges, a relief valve and inlet and outlet shut-off valves for the purge and the process gas. A choice of stainless steel coils or flexible high pressure hoses is available for the connection to the gas cylinder. The use of contact pressure gauges (accessories) facilitates monitoring of the gas reserves.

### Application

Double-stage,s are installed in the gas cabinet near to the point of use. They reduce the cylinder supply pressure to the operating pressure of the succeeding consumers.

This design with external gas purging offers the following advantages:

1. Purging the gas rest remaining in the system before cylinder changing improves the personal safety level.
2. Maintaining gas purity by purging the atmospheric air which has penetrated the system after cylinder changing.
3. Purging with dry inert gas reduces humidity and extends the expected live span when corrosive gases are used.

### Technical data

Body material:	stainless steel 316L (1.4404) specially cleaned and electro-polished
Seat sealing 1st stage:	PCTFE
Seat sealing 2nd stage:	PTFE
Body sealing material:	PCTFE
Relief valve seat material:	FKM, (EPDM, FFKM) on request
Pressure gauge range:	-1 - 5 bar (-15 - 75 psi) -1 - 10 bar (-15 - 145 psi) 0 - 315 bar (0 - 4500 psi)
Dimensions (wxhxd)	400 x 235 x 210 mm / 12" x 9,25" x 8,27"
Weight:	1,2 kg
Purge inlet:	tube fitting 6 mm with integrated check valve
Purge gas outlet:	tube fitting 6 mm
Inlet:	M 14 x 1,5 (standard) NPT 1/4" f (optional)

### Order code

Type	Material	Inlet pressure	Outlet pressure	Inlet conn.	Outlet conn.	Contact pressure gauge	Gas type
<b>SMD 502-27</b>	<b>SS</b>	<b>F</b>	<b>3</b>	<b>N14</b>	<b>CL6</b>	<b>Ki</b>	<b>Gas</b>
SMD 502-27	SS = stainless steel	F = 230 bar/3300 psi	3 = 0,1 - 3 bar/ 1,5 - 45 psi 6 = 0,5 - 6 bar/ 7 - 85 psi 10,5 = 0,5 - 10,5 bar/ 7 - 145 psi	N14 = NPT 1/4"	0 CL6 CL8 CL10 CL12	0 = without Ki = with	Specification of used gas

For proper installation and service of this panel a gas specific spiral connection tube is necessary. See in chapter Accessory page 94.

Outlet: (expl.: CL6=tube fitting with outer diameter 6 mm, 0 = without).