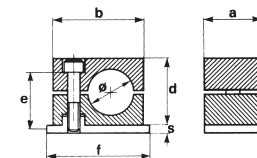


**Collari serie standard  
in polipropilene,  
poliammide autoestinguente,  
gomma o alluminio**

**Standard clamps  
in polypropylene,  
self-extinguishing polyamide,  
rubber or aluminium**

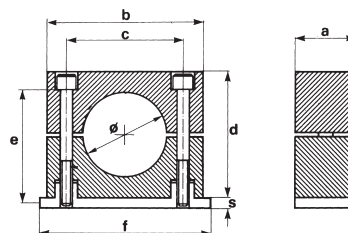
gruppo  
group

**0**



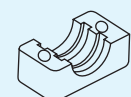
gruppo  
group

**1 ÷ 6**

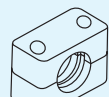


gruppo - group	diametro tubo pipe diameter			tipo di collare clamp type				dimensioni in mm dimension in mm						pezzi per confezione box quantity	
	Ø mm	pollici / inches G	Ø O.D.	A polipropilene polypropylene	MA polyamide self-extinguishing	RA gomma rubber	LA alluminio aluminium	a	b	c	d	f	s		e
0	6			A <sub>0</sub> 06	MA <sub>0</sub> 06	–	–	30	28	–	27	31,5	3	M6x20	50
	8		5/16"	A <sub>0</sub> 08	MA <sub>0</sub> 08	–	–								
	10	1/8"		A <sub>0</sub> 10	MA <sub>0</sub> 10	–	–								
	12			A <sub>0</sub> 12	MA <sub>0</sub> 12	–	–								
1	6			A <sub>1</sub> 06	MA <sub>1</sub> 06	RA <sub>1</sub> 06	LA <sub>1</sub> 06	30	34	20	27	41	3	M6x20	50
	6,4		1/4"	A <sub>1</sub> 6,4	MA <sub>1</sub> 6,4	RA <sub>1</sub> 6,4	LA <sub>1</sub> 6,4								
	8		5/16"	A <sub>1</sub> 08	MA <sub>1</sub> 08	RA <sub>1</sub> 08	LA <sub>1</sub> 08								
	9,5		3/8"	A <sub>1</sub> 9,5	MA <sub>1</sub> 9,5	RA <sub>1</sub> 9,5	LA <sub>1</sub> 9,5								
	10	1/8"		A <sub>1</sub> 10	MA <sub>1</sub> 10	RA <sub>1</sub> 10	LA <sub>1</sub> 10								
2	12,7		1/2"	A <sub>2</sub> 12,7	MA <sub>2</sub> 12,7	RA <sub>2</sub> 12,7	LA <sub>2</sub> 12,7	30	40	26	33	46	3	M6x25	50
	13,5	1/4"		A <sub>2</sub> 1/4"	MA <sub>2</sub> 1/4"	RA <sub>2</sub> 1/4"	LA <sub>2</sub> 1/4"								
	14			A <sub>2</sub> 14	MA <sub>2</sub> 14	RA <sub>2</sub> 14	LA <sub>2</sub> 14								
	15			A <sub>2</sub> 15	MA <sub>2</sub> 15	RA <sub>2</sub> 15	LA <sub>2</sub> 15								
	16		5/8"	A <sub>2</sub> 16	MA <sub>2</sub> 16	RA <sub>2</sub> 16	LA <sub>2</sub> 16								
	17,2	3/8"		A <sub>2</sub> 3/8"	MA <sub>2</sub> 3/8"	RA <sub>2</sub> 3/8"	LA <sub>2</sub> 3/8"								
	18			A <sub>2</sub> 18	MA <sub>2</sub> 18	RA <sub>2</sub> 18	LA <sub>2</sub> 18								
3	19		3/4"	A <sub>3</sub> 19	MA <sub>3</sub> 19	RA <sub>3</sub> 19	LA <sub>3</sub> 19	30	48	33	35	54	3	M6x30	50
	20			A <sub>3</sub> 20	MA <sub>3</sub> 20	RA <sub>3</sub> 20	LA <sub>3</sub> 20								
	21,3	1/2"		A <sub>3</sub> 1/2"	MA <sub>3</sub> 1/2"	RA <sub>3</sub> 1/2"	LA <sub>3</sub> 1/2"								
	22		7/8"	A <sub>3</sub> 22	MA <sub>3</sub> 22	RA <sub>3</sub> 22	LA <sub>3</sub> 22								
	25			A <sub>3</sub> 25	MA <sub>3</sub> 25	RA <sub>3</sub> 25	LA <sub>3</sub> 25								
4	25,4	1"		A <sub>3</sub> 25,4	MA <sub>3</sub> 25,4	RA <sub>3</sub> 25,4	LA <sub>3</sub> 25,4	30	57	40	42	61	3	M6x35	25
	26,9	3/4"		A <sub>4</sub> 3/4"	MA <sub>4</sub> 3/4"	RA <sub>4</sub> 3/4"	LA <sub>4</sub> 3/4"								
	28			A <sub>4</sub> 28	MA <sub>4</sub> 28	RA <sub>4</sub> 28	LA <sub>4</sub> 28								
	30			A <sub>4</sub> 30	MA <sub>4</sub> 30	RA <sub>4</sub> 30	LA <sub>4</sub> 30								
5	32		1 1/4"	A <sub>4</sub> 32	MA <sub>4</sub> 32	RA <sub>4</sub> 32	LA <sub>4</sub> 32	30	68	52	58	73	3	M6x50	25
	32		1 1/4"	A <sub>5</sub> 32	MA <sub>5</sub> 32	RA <sub>5</sub> 32	LA <sub>5</sub> 32								
	33,7	1"		A <sub>5</sub> 1"	MA <sub>5</sub> 1"	RA <sub>5</sub> 1"	LA <sub>5</sub> 1"								
	35			A <sub>5</sub> 35	MA <sub>5</sub> 35	RA <sub>5</sub> 35	LA <sub>5</sub> 35								
	38		1 1/2"	A <sub>5</sub> 38	MA <sub>5</sub> 38	RA <sub>5</sub> 38	LA <sub>5</sub> 38								
	40			A <sub>5</sub> 40	MA <sub>5</sub> 40	RA <sub>5</sub> 40	LA <sub>5</sub> 40								
	42			A <sub>5</sub> 42	MA <sub>5</sub> 42	RA <sub>5</sub> 42	LA <sub>5</sub> 42								
6	42,4	1 1/4"		A <sub>5</sub> 1 1/4"	MA <sub>5</sub> 1 1/4"	RA <sub>5</sub> 1 1/4"	LA <sub>5</sub> 1 1/4"	30	86	66	66	89	3	M6x60	25
	44,5		1 3/4"	A <sub>6</sub> 44,5	MA <sub>6</sub> 44,5	RA <sub>6</sub> 44,5	LA <sub>6</sub> 44,5								
	48,3	1 1/2"		A <sub>6</sub> 1 1/2"	MA <sub>6</sub> 1 1/2"	RA <sub>6</sub> 1 1/2"	LA <sub>6</sub> 1 1/2"								
	50,8		2"	A <sub>6</sub> 50,8	MA <sub>6</sub> 50,8	RA <sub>6</sub> 50,8	LA <sub>6</sub> 50,8								

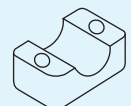
A... = polipropilene / polypropylene\* MA... = polyamide / self-extinguishing RA... = gomma / rubber LA... = alluminio / aluminium  
 ...H = interno liscio / smooth inside (per ordine di collari tipo H, aggiungere H dopo il codice / to order clamps type H, please put the H at the end of the code)



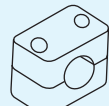
tipo normale  
interno sagomato  
normal model  
profiled inside



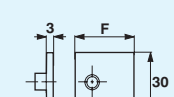
tipo normale  
interno sagomato  
normal model  
profiled inside



tipo H  
interno liscio  
H model  
smooth inside

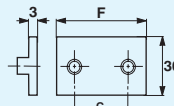


tipo H  
interno liscio  
H model  
smooth inside



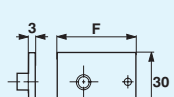
gruppo  
group

**0**



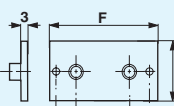
gruppo  
group

**1 ÷ 6**



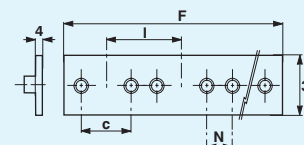
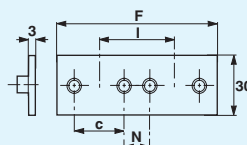
gruppo  
group

**0**



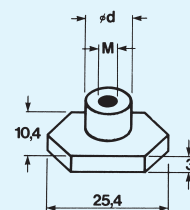
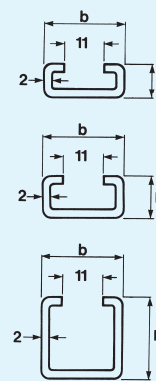
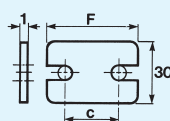
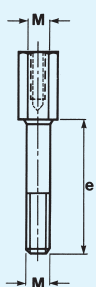
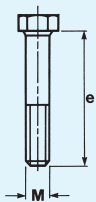
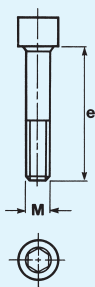
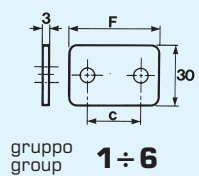
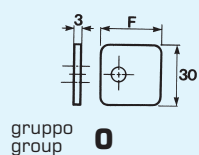
gruppo  
group

**1 ÷ 6**



semi-collare clamp-half	coppia collari clamp body (2 halves)	piastra inferiore lower plate		piastra inferiore allungata prolonged lower plate			piastra inferiore doppia double lower plate					piastra inferiore multipla multiple lower plate				
		<b>APIN</b>		<b>APIA</b>			<b>APID</b>					<b>APIM</b>				
<b>A....S</b>	<b>A....C</b>	F mm	c mm	F mm	c mm	d mm	F mm	c mm	N mm	l mm	n° collari clamps	F mm	c mm	N mm	l mm	n° collari clamps
A <sub>0</sub> 06 S	A <sub>0</sub> 06 C	<b>APIN<sub>0</sub></b>		<b>APIA<sub>0</sub></b>			<b>APID<sub>0</sub></b>					<b>APIM<sub>0</sub></b>				
A <sub>0</sub> 08 S	A <sub>0</sub> 08 C															
A <sub>0</sub> 10 S	A <sub>0</sub> 10 C	31,5	–	46	–	–	63	–	–	30	2	315	–	–	30	10
A <sub>0</sub> 12 S	A <sub>0</sub> 12 C															
A <sub>1</sub> 06 S	A <sub>1</sub> 06 C	<b>APIN<sub>1</sub></b>		<b>APIA<sub>1</sub></b>			<b>APID<sub>1</sub></b>					<b>APIM<sub>1</sub></b>				
A <sub>1</sub> 6,4 S	A <sub>1</sub> 6,4 C															
A <sub>1</sub> 08 S	A <sub>1</sub> 08 C															
A <sub>1</sub> 9,5 S	A <sub>1</sub> 9,5 C	41	20	64	20	51	82	20	20	40	2	410	20	20	40	10
A <sub>1</sub> 10 S	A <sub>1</sub> 10 C															
A <sub>1</sub> 12 S	A <sub>1</sub> 12 C															
A <sub>2</sub> 12,7 S	A <sub>2</sub> 12,7	<b>APIN<sub>2</sub></b>		<b>APIA<sub>2</sub></b>			<b>APID<sub>2</sub></b>					<b>APIM<sub>2</sub></b>				
A <sub>2</sub> 1/4" S	A <sub>2</sub> 1/4" C															
A <sub>2</sub> 14 S	A <sub>2</sub> 14 C															
A <sub>2</sub> 15 S	A <sub>2</sub> 15 C															
A <sub>2</sub> 16 S	A <sub>2</sub> 16 C	46	26	70	26	56	92	26	18	44	2	460	26	18	44	10
A <sub>2</sub> 3/8" S	A <sub>2</sub> 3/8" C															
A <sub>2</sub> 18 S	A <sub>2</sub> 18 C															
A <sub>2</sub> 19 S	A <sub>2</sub> 19 C															
A <sub>3</sub> 19 S	A <sub>3</sub> 19 C	<b>APIN<sub>3</sub></b>		<b>APIA<sub>3</sub></b>			<b>APID<sub>3</sub></b>					<b>APIM<sub>3</sub></b>				
A <sub>3</sub> 20 S	A <sub>3</sub> 20 C															
A <sub>3</sub> 1/2" S	A <sub>3</sub> 1/2" C															
A <sub>3</sub> 22 S	A <sub>3</sub> 22 C	54	33	78	33	64	108	33	19	52	2	540	33	19	52	10
A <sub>3</sub> 25 S	A <sub>3</sub> 25 C															
A <sub>3</sub> 25,4 S	A <sub>3</sub> 25,4 C															
A <sub>4</sub> 3/4" S	A <sub>4</sub> 3/4" C	<b>APIN<sub>4</sub></b>		<b>APIA<sub>4</sub></b>			<b>APID<sub>4</sub></b>					<b>APIM<sub>4</sub></b>				
A <sub>4</sub> 28 S	A <sub>4</sub> 28 C															
A <sub>4</sub> 30 S	A <sub>4</sub> 30 C	61	40	86	40	71	122	40	20	60	2	305	40	20	60	5
A <sub>4</sub> 32 S	A <sub>4</sub> 32 C															
A <sub>5</sub> 32 S	A <sub>5</sub> 32 C	<b>APIN<sub>5</sub></b>		<b>APIA<sub>5</sub></b>			<b>APID<sub>5</sub></b>					<b>APIM<sub>5</sub></b>				
A <sub>5</sub> 1" S	A <sub>5</sub> 1" C															
A <sub>5</sub> 35 S	A <sub>5</sub> 35 C															
A <sub>5</sub> 38 S	A <sub>5</sub> 38 C															
A <sub>5</sub> 40 S	A <sub>5</sub> 40 C	73	52	97	52	83	146	52	23	75	2	365	52	23	75	5
A <sub>5</sub> 42 S	A <sub>5</sub> 42 C															
A <sub>5</sub> 1 1/4" S	A <sub>5</sub> 1 1/4" C															
A <sub>5</sub> 45 S	A <sub>5</sub> 45 C															
A <sub>6</sub> 44,5 S	A <sub>6</sub> 44,5 C	<b>APIN<sub>6</sub></b>		<b>APIA<sub>6</sub></b>			<b>APID<sub>6</sub></b>					<b>APIM<sub>6</sub></b>				
A <sub>6</sub> 1 1/2" S	A <sub>6</sub> 1 1/2" C															
A <sub>6</sub> 50,8 S	A <sub>6</sub> 50,8 C	89	66	112	66	100	178	66	24	90	2	445	66	24	90	5

\* La produzione standard è di colore verde, colore nero su richiesta.  
 Standard production in green, black color on request.



piastra superiore upper plate	vite a testa tonda esagono interno T.C.E.I. screws	vite a testa esagonale hexagonal head screw	vite a testa esag. allungata high hexeg. head screw	piastra superiore di sicurezza security upper plate	binari portanti spessore 2 mm rail	dado esagonale fissaggio binari hexagonal nut		
<b>APS</b>	<b>AVTC</b>	<b>AVTE</b>	<b>AVTEA</b>	<b>APMRS</b>	<b>ABINS</b>	<b>ADES</b>		
F mm	c mm	M	e mm	M	e mm	M	ø d mm	
<b>APS<sub>0</sub></b>	<b>AVTC<sub>0</sub></b>	<b>AVTE<sub>0</sub></b>	<b>AVTEA<sub>0</sub></b>	<b>APMRS<sub>0</sub></b>	<b>ABINS-1</b>	<b>ADES</b>		
28	—	M6 20	M6 30	M6 20			28	—
<b>APS<sub>1</sub></b>	<b>AVTC<sub>1</sub></b>	<b>AVTE<sub>1</sub></b>	<b>AVTEA<sub>1</sub></b>	<b>APMRS<sub>1</sub></b>	<b>ABINS-2</b>			
37	20	M6 20	M6 30	M6 20			34	20
<b>APS<sub>2</sub></b>	<b>AVTC<sub>2</sub></b>	<b>AVTE<sub>2</sub></b>	<b>AVTEA<sub>2</sub></b>	<b>APMRS<sub>2</sub></b>			<b>ABINS-3</b>	
43	26	M6 25	M6 35	M6 25	41	26		
<b>APS<sub>3</sub></b>	<b>AVTC<sub>3</sub></b>	<b>AVTE<sub>3</sub></b>	<b>AVTEA<sub>3</sub></b>	<b>APMRS<sub>3</sub></b>		M6	12	
50	33	M6 30	M6 40	M6 30	28	14		
<b>APS<sub>4</sub></b>	<b>AVTC<sub>4</sub></b>	<b>AVTE<sub>4</sub></b>	<b>AVTEA<sub>4</sub></b>	<b>APMRS<sub>4</sub></b>				
57	40	M6 35	M6 45	M6 35	28	30		
<b>APS<sub>5</sub></b>	<b>AVTC<sub>5</sub></b>	<b>AVTE<sub>5</sub></b>	<b>AVTEA<sub>5</sub></b>	<b>APMRS<sub>5</sub></b>				
69	52	M6 50	M6 60	M6 50	67	52		
<b>APS<sub>6</sub></b>	<b>AVTC<sub>6</sub></b>	<b>AVTE<sub>6</sub></b>	<b>AVTEA<sub>6</sub></b>	<b>APMRS<sub>6</sub></b>				
83	66	M6 60	M6 70	M6 60	82	66		

\* Altre piastre speciali sono a pag. 20  
Other special plate are at page 20