

Single-stage, for inert, reactive, flammable and oxidizing gas and gas mixtures, purity max. 6.0, inlet pressure 230 bar/ 3300 psi, outlet pressure preset 14 bar/ 200 psi

Highlights

- ▲ **Uninterrupted gas supply with semiautomatic change over**
- ▲ **Definite indication of active cylinder**
- ▲ **Low pressure warning by means of contact pressure gauges (optionally available)**
- ▲ **Extendable to max. 2 x 5 cylinders**

Features

Pressure decrease of the active cylinder (or bundle) below a preset level causes semi-automatic switch over to the full cylinder side. This is achieved by 2 integrated regulators (factory-set to slightly different delivery pressure levels), connected at their outlet ports.

Moving the lever towards the full battery side, this allows to disconnect and replace the empty cylinder without interrupting gas supply. The lever position always indicates cylinder priority in being discharged.

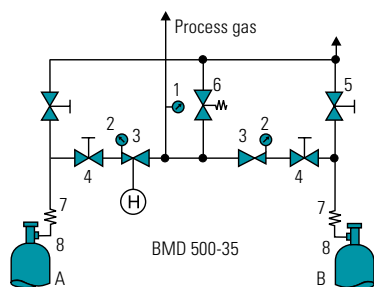
Optional contact pressure gauges, connected to an alarm box, indicate optical and audible alarm in case of pressure drop below a preset level. That ensures empty tanks to be replaced in time.

Application

This gas panel supplying is necessary component, wherever uninterrupted process gas supply with semi- automatic change over is needed.

Technical data

Body:	stainless steel 316L (1.4404) specially cleaned and electro-polished or brass CW614 (CuZn39Pb3) specially cleaned, chrome-plated
Seat sealing:	PCTFE
Body sealings:	PCTFE (SS), PVDF (brass)
Relief valve seat material	FKM, (EPDM, FFKM)*, EPDM, (FKM)* *on request
Performance data:	see chapter 5.1
Basic design aspects:	see page 10
Pressure gauge range:	-1 - 18 bar (-15 - 260 psi) 0 - 315 bar (0 - 4500 psi)
Dimensions: (wxhxd):	300 x 155 x 240 mm
Weight:	5.2 kg (BMD 500-35)
Preset outlet pressure:	14 bar +/- 2 bar ; 200 +/- 30 psi
Flow:	25 Nm ³ /h N ₂ (12 bar - type at 25 bar inlet press.) 14 SCFM N ₂ (12 bar - type at 360 psi inlet press.)
Purge inlet and outlet:	tube fitting 6 mm (BMD 500-34)
Connection:	2 x 1 to 2 x 5 cylinders
Inlet:	M 14 x 1,5 (standard) NPT 1/4" f (optional)



- 1 pressure regulator
- 2 inlet pressure gauge
- 3 outlet pressure gauge
- 4 process gas valve
- 5 purge gas outlet valve
- 6 safety relief valve
- 7 spiral connection tube
- 8 metal- mesh filter
- A, B gas cylinders
- H lever

Order code

Type	Material	Inlet pressure	Outlet pressure	Inlet conn.	Outlet conn.	Gas type
BMD 500-35	BC	F	14	N14	CL6 BC	Gas
BMD 500-34	BC = brass	F = 230 bar	14 = 14 bar/	N14 =	0	Specification
(with external gas purging)	SS = stainless	/3300 psi	200 psi	NPT 1/4"	CL6, CL8	of used gas
BMD 500-35	steel				CL10, CL12	
(with internal gas purging)					BC = brass	
BMD 500-39					SS = stainless	
(without purging)					steel	

For proper installation and service of this panel a gas specific spiral connection tube is necessary. See in chapter Accessory page 94.

Outlet: (expl.: CL6=tube fitting with outer diameter 6 mm, 0 = without).