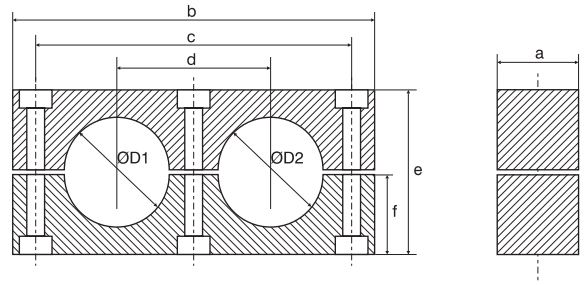


Collari doppi serie pesante in polipropilene o poliammide autoestinguente

Heavy duty double clamps in polypropylene and self-extinguishing polyamid



| gruppo - group | diametro tubo pipe diameter | | tipo di collare clamp type | | dimensioni in mm dimension in mm | | | | | |
|----------------|--------------------------------|-----------------------|--|--|-------------------------------------|-----|-----|----|----|----|
| | ØD1/ØD2 mm | pollici/inches G Ø | AMD.P polipropilene polypropylene | MMD.P poliammide self-extinguishing | a | b | c | d | e | f |
| 4 | 19/19 | 3/4 | AMD.P ₄ 19/19 | MMD.P ₄ 19/19 | 30 | 115 | 90 | 45 | 48 | 24 |
| | 20/20 | | AMD.P ₄ 20/20 | MMD.P ₄ 20/20 | | | | | | |
| | 21,3/21,3 | 1/2 | AMD.P ₄ 21,3/21,3 | MMD.P ₄ 21,3/21,3 | | | | | | |
| | 22/22 | 7/8 | AMD.P ₄ 22/22 | MMD.P ₄ 22/22 | | | | | | |
| | 25,4/25,4 | | AMD.P ₄ 25,4/25,4 | MMD.P ₄ 25,4/25,4 | | | | | | |
| | 26,9/26,9 | 3/4 | AMD.P ₄ 26,9/26,9 | MMD.P ₄ 26,9/26,9 | | | | | | |
| 5 | 32/32 | 3" | AMD.P ₅ 32/32 | MMD.P ₅ 32/32 | 30 | 144 | 120 | 60 | 60 | 30 |
| | 33,7/33,7 | | AMD.P ₅ 33,7/33,7 | MMD.P ₅ 33,7/33,7 | | | | | | |
| | 38/38 | 3 1/2" | AMD.P ₅ 38/38 | MMD.P ₅ 38/38 | | | | | | |
| | 40/40 | 4" | AMD.P ₅ 40/40 | MMD.P ₅ 40/40 | | | | | | |
| | 42/42 | 4" | AMD.P ₅ 42/42 | MMD.P ₅ 42/42 | | | | | | |

| coppia collare clamp body (2 halves) | | piastra inferiore lower plate | | | | | piastra superiore cover plate | | | | | vite a testa esagonale hexagonal head screw | | | |
|--|--|----------------------------------|---------------------------|-----|----|---|----------------------------------|--------------------------|-----|----|---|--|---------------------------|-----|----|
| AMD.P polipropilene polypropylene | MMD.P poliammide self-extinguishing | APINDP | | | | | APSDP | | | | | AVTEDP | | | |
| | | 2c | Ø m | Ø D | s | f | a | 2c | Ø m | s | b | a | M | e | |
| 4 | AMD.P ₄ 19/19 C | MMD.P ₄ 19/19 C | APINDP₄ | | | | | APSDP₄ | | | | | AVTEDP₄ | | |
| | AMD.P ₄ 20/20 C | MMD.P ₄ 20/20 C | 90 | 10 | 18 | 8 | 130 | 30 | 90 | 11 | 8 | 115 | 30 | M10 | 60 |
| | AMD.P ₄ 21,3/21,3 C | MMD.P ₄ 21,3/21,3 C | | | | | | | | | | | | | |
| | AMD.P ₄ 22/22 C | MMD.P ₄ 22/22 C | | | | | | | | | | | | | |
| | AMD.P ₄ 25,4/25,4 C | MMD.P ₄ 25,4/25,4 C | | | | | | | | | | | | | |
| | AMD.P ₄ 26,9/26,9 C | MMD.P ₄ 26,9/26,9 C | | | | | | | | | | | | | |
| | | | | | | | | | | | | | | | |
| 5 | AMD.P ₅ 32/32 C | MMD.P ₅ 32/32 C | APINDP₅ | | | | | APSDP₅ | | | | | AVTEDP₅ | | |
| | AMD.P ₅ 33,7/33,7 C | MMD.P ₅ 33,7/33,7 C | 120 | 10 | 18 | 8 | 160 | 30 | 120 | 11 | 8 | 144 | 30 | M10 | 70 |
| | AMD.P ₅ 38/38 C | MMD.P ₅ 38/38 C | | | | | | | | | | | | | |
| | AMD.P ₅ 40/40 C | MMD.P ₅ 40/40 C | | | | | | | | | | | | | |
| | AMD.P ₅ 42/42 C | MMD.P ₅ 42/42 C | | | | | | | | | | | | | |

* La produzione standard è di colore verde, colore nero su richiesta. / Standard production in green, black color on request.